



## FALLEN ANGEL VARSITY JACKET - Style #FAVJ

AM 475 - FA2022, Men's, FA2022, 2022-2023

## Summary



FALLEN ANGEL VARSITY JACKET

Name	FALLEN ANGEL VARSITY JACKET
Style No.	FAVJ
Description	The varsity jacket a staple in ones wardrobe but this piece includes magnetic buttons along center for easy dress and various design details on front and back to stand out from others
Division	AM 475 - FA2022
Category	Men's
Season	FA2022
Year	2022-2023
Size Scale	<b>MEDIUM</b> -Sample size
	<input type="button" value="SMALL"/> <input type="button" value="MEDIUM"/> <input type="button" value="LARGE"/> <input type="button" value="XL"/> <input type="button" value="2XL"/> <input type="button" value="3XL"/>
Created by/Author	12/13/2022 darius vanvelkinburgh vanvelkinburgh.darius@gmail.com



# FALLEN ANGEL VARSITY JACKET - Style #FAVJ

AM 475 - FA2022, Men's, FA2022, 2022-2023

Color Variants



1.



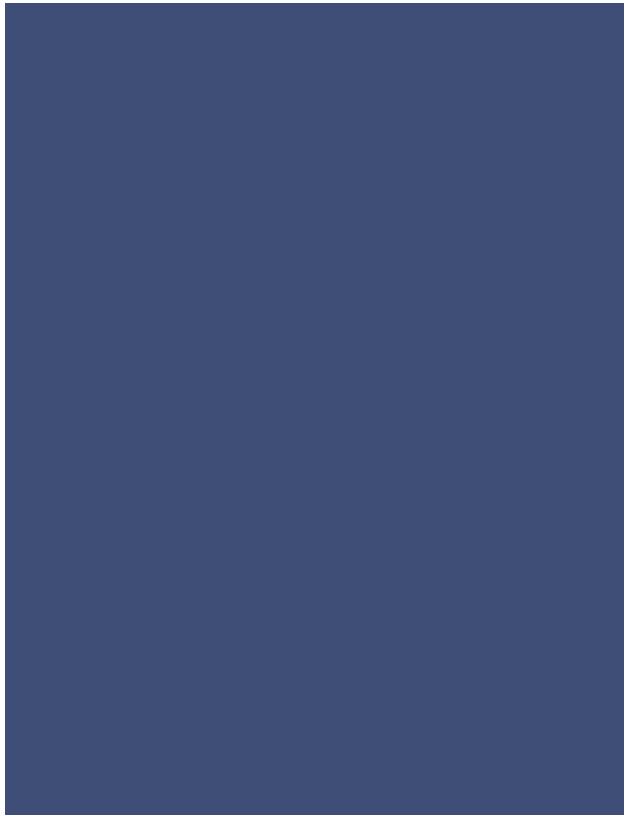
OLIVE GREEN  
Custom Code: 5C694D  
Int. Code: Not Set  
Ext. Code: Not Set



# FALLEN ANGEL VARSITY JACKET - Style #FAVJ

AM 475 - FA2022, Men's, FA2022, 2022-2023

Color Variants



2.



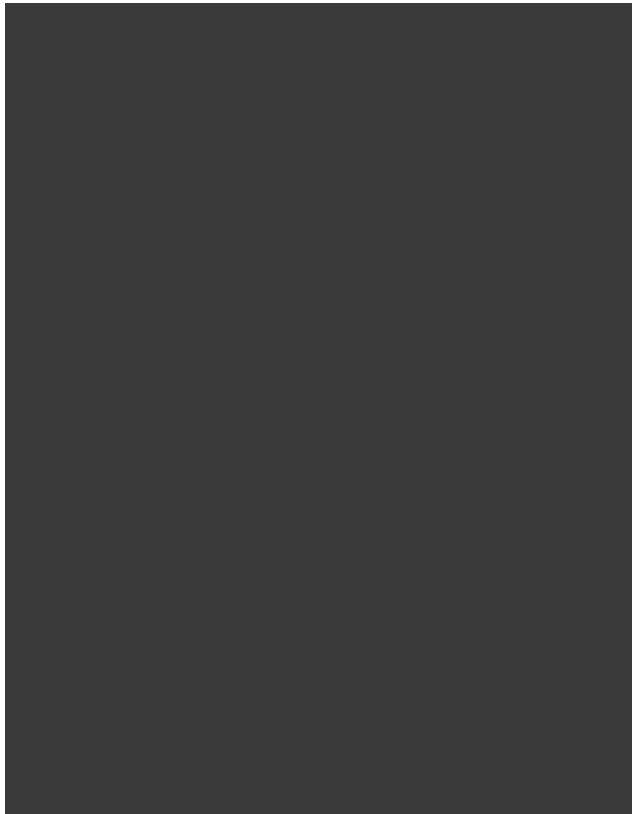
**MILITARY BLUE**  
Custom Code: 394F79  
Int. Code: Not Set  
Ext. Code: Not Set



# FALLEN ANGEL VARSITY JACKET - Style #FAVJ

AM 475 - FA2022, Men's, FA2022, 2022-2023

Color Variants



3.



STONE BLACK  
Custom Code: 3A3A3A  
Int. Code: Not Set  
Ext. Code: Not Set





Instagram progile pic\_Colorway A\_6-1



Instagram progile pic\_Colorway A Copy 1\_6-1



Instagram progile pic\_Colorway A Copy 2\_6-1



Components (7)

- B1** White Cotton Fabric
- B2** White Cotton Fabric
- B3** 100% Faux Leather
- B4** 100% Faux Leather
- B5** Cotton Rib Knit Fabric - IBIS
- B6** Cotton Rib Knit Fabric - IBIS
- B7** Cotton Rib Knit Fabric - IBIS

Instagram progile pic\_Colorway A Copy 1 copy-1



Components (3)

- B1** White Cotton Fabric
- B2** 100% Faux Leather
- B3** 100% Faux Leather

Instagram progile pic\_Colorway A Copy 1 copy 3-1





Instagram profile pic\_Colorway A Copy 2 copy 3-1



Construction Details (3)

- C1 301 topstitch
- C2 301 topstitch
- C3 301 topstitch

Instagram progile pic\_Colorway A Copy 2 copy-1



Points of measure (10)

- D1** Center Front Length
- D2** Chest Width Circumference (woven)
- D3** Curved Armhole Width Circumference (woven)
- D4** sleeve opening width
- D5** Neck Width, Collar
- D6** Neck Depth Front
- D7** Across Shoulder
- D8** Bottom Opening/Sweep Width Circumference (woven top)
- D9** Zipper Pocket Length
- D10** Zipper Pocket Width

Instagram profigle pic\_Colorway A copy-1





Points of measure (2)

**D1** Center Back Length

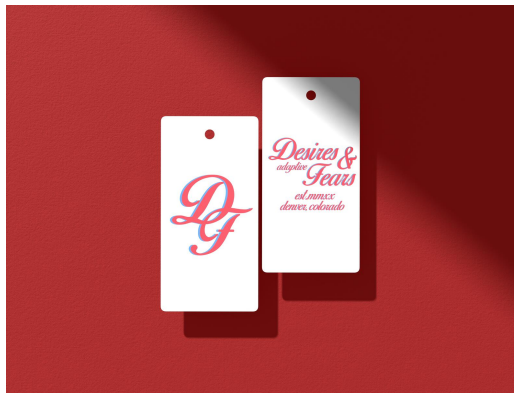
**D2** Collar Height

Instagram progile pic\_Colorway A copy 4-1



*Small*

back tag4-1



render\_8498-1



render\_2518-1







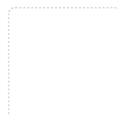
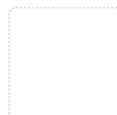








# FALLEN ANGEL VARSITY JACKET - Style #FAVJ

AM 475 - FA2022, Men's, FA2022, 2022-2023

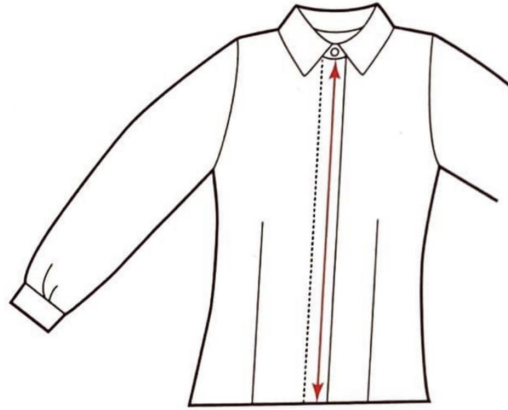
BOM > Set 1 of 1

THUMBNAIL	COMPONENT	QTY	PLACEMENT	STATUS	COO	1.  OLIVE GREEN CODE: 5C694D	2.  MILITARY BLUE CODE: 394F79	3.  STONE BLACK CODE: 3A3A3A
<b>MATERIALS</b>								
1	 <b>White Cotton Fabric</b> CODE: BB23 Supplier: Sofileta Content (Fiber Content): Cotton Fabric Width: 58" Finishes: n/a Dye Method: Piece Dyed Size: n/a	2 /yd		In Development	China	- White Cotton Fabric- BB23 n/a Price: \$4	- White Cotton Fabric- BB23 n/a Price: \$4	- White Cotton Fabric- BB23 n/a Price: \$4
<b>PACKAGING/LABELS</b>								
2	 <b>Shipping Box</b> CODE: SB0001 Supplier: Factory Supplied Finishes: N/A Dye Method: N/A Size: 6x3x9 AM 475 - Developer's Name: Darius Vanvelkinburgh	1 /Pieces		Approved	China	- Shipping Box- SB0001 n/a Price: \$0.1	- Shipping Box- SB0001 n/a Price: \$0.1	- Shipping Box- SB0001 n/a Price: \$0.1
3	 <b>Hang Tag D&amp;F</b> CODE: HT0002 Supplier: Factory Supplied Content (Fiber Content): Paper Finishes: N/A Dye Method: N/A Size: 2x4 AM 475 - Developer's Name: Darius Vanvelkinburgh	1 /Pieces		Approved	China	- Hang Tag D&F- HT0002 n/a Price: \$0.05	- Hang Tag D&F- HT0002 n/a Price: \$0.05	- Hang Tag D&F- HT0002 n/a Price: \$0.05
4	 <b>Size Label</b> CODE: SL001 Supplier: Factory Supplied Content (Fiber Content): 100% Cotton Finishes: N/A Dye Method: N/A Size: 2x1 AM 475 - Developer's Name: Darius Vanvelkinburgh	1 /Pieces		Approved	China	- Size Label- SL001 n/a Price: \$0.05	- Size Label- SL001 n/a Price: \$0.05	- Size Label- SL001 n/a Price: \$0.05
<b>TRIMS</b>								
5	 <b>100% Cotton Thread Lehnhausen</b> CODE: k0kld Supplier: Factory Supplied Content (Fiber Content): 100% cotton Fabric Width: 48" Finishes: NA Dye Method: Piece Dyed Size: NA AM 475 - Developer's Name: Lehnhausen	1 /Pieces		In Development	China	 0000 DTM Custom Code: 0000DTM Price: \$0.55	 0000 DTM Custom Code: 0000DTM Price: \$0.55	 0000 DTM Custom Code: 0000DTM Price: \$0.55
6	 <b>Antique Brass Snaps - Martens</b> CODE: KhJ6F Supplier: To Be Determined Content (Fiber Content): metal Dye Method: N/A Size: 15mn	1 /Pieces		In Development	China	 Antique Bronze Custom Code: 17-1028 TCX - martens Price: \$0.05	 Antique Bronze Custom Code: 17-1028 TCX - martens Price: \$0.05	 Antique Bronze Custom Code: 17-1028 TCX - martens Price: \$0.05
Components <b>6</b>						Total <b>\$8.80</b>	Total <b>\$8.80</b>	Total <b>\$8.80</b>



**FALLEN ANGEL VARSITY JACKET - Style #FAVJ**

AM 475 - FA2022, Men's, FA2022, 2022-2023



2.

Center Front Length



Across Shoulder



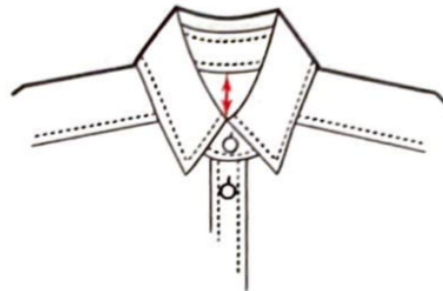
15.

Across Chest

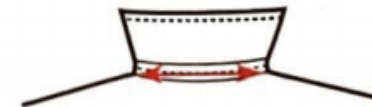


27.

Bottom Opening/Sweep Width Circumference  
(Woven Top)

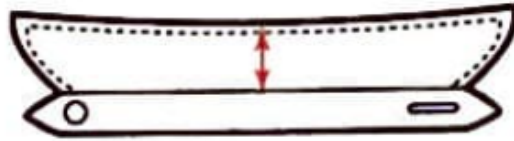


Neck Depth Front

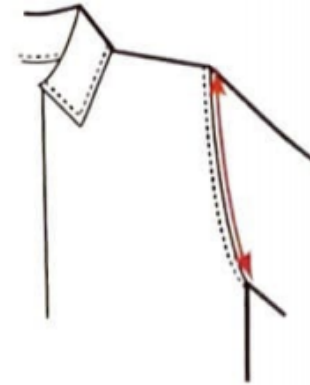


63.

Neck Width, Collar



72.  
Collar Height

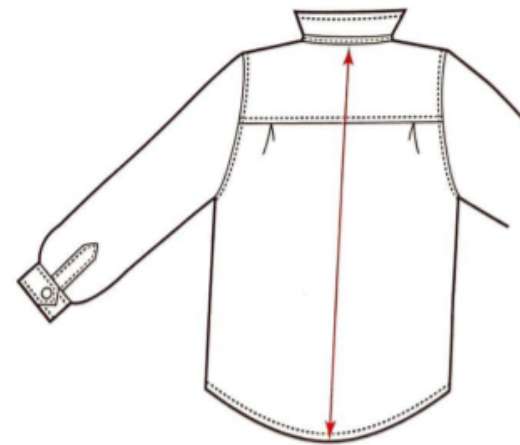


43.

Curved Armhole Width Circumference (Woven)



Sleeve Opening Width, Stretched (Knit)



3.

Center Back Length



**Sample Size: MEDIUM**

POINT OF MEASURE	CODE	HOW TO MEASURE	CRITICAL	TYPE	TOLERANCE	SMALL	MEDIUM	LARGE	XL	2XL	3XL
Center Front Length	h8YzLx	Measure from center front neck joining seams straight down to the bottom of the garment	true	Full	0 in	0 in	26 in	0 in	0 in	0 in	0 in
Across Shoulder	13	Measure straight across front from armhole seam/edge to armhole seam/edge at shoulder seam or across natural shoulder fold line created if there is no seam.	true	Full	1/4 in	0 in	18 in	0 in	0 in	0 in	0 in
Across Chest	15	Measure 2 1/2" down from collar/rib joining seam at center front straight across front of garment from armhole seam/edge to armhole seam/edge. [Note: the 2 1/2" measurement point is for misses/womens wear only and may need to be adjusted up or down 1/4" to 1/2" accordingly for men's, children's, junior's and larger/plus sizes. Indicate any changes on spec sheet.]	false	Half	1/4 in	0 in	16 in	0 in	0 in	0 in	0 in
Bottom Opening/Sweep Width Circumference (woven top)	27	Measure from edge of garment/side seam straight across garment at bottom opening. Reporting half of the circumference measurement. [Note: if sweep has pleats, measure with pleats closed or relaxed.]	false	Full	1/2 in	0 in	20 in	0 in	0 in	0 in	0 in
Neck Depth Front	58	Measure from CB neck joining seam to CF neck joining	true	Full	1/8 in	0 in	3 in	0 in	0 in	0 in	0 in
Neck Width, Collar	63	Measure straight across back neck from neck-shoulder joining seam to neck-shoulder joining seam or natural shoulder line if no seam. This measurement is taken with back of garment faceup.	true	Full	1/8 in	0 in	9 in	0 in	0 in	0 in	0 in
Collar Height	72	Measure from collar/rib joining seam at center back neck straight up to outer edge.	true	Full	0 in	0 in	3 in	0 in	0 in	0 in	0 in
Curved Armhole Width Circumference (woven)	43	Measure from top of shoulder joining seam/edge to bottom of armhole, following contour of armhole. Reporting half of the circumference measurement.	true	Half	0 in	0 in	12 in	0 in	0 in	0 in	0 in
Sleeve Opening Width, Stretched (Knit)	54	Lay garment sleeve flat, measure opening from seam to fold while fully stretched	true	Half	1/8 in	0 in	5 in	0 in	0 in	0 in	0 in
Center Back Length	3	Measure from center back neck joining seam straight down to bottom of garment at center back. If needed, gently lift the collar away from back neck to expose joining seam.	false	Full	1/2 in	0 in	26 1/2 in	0 in	0 in	0 in	0 in



Sample Size: MEDIUM

POINT OF MEASURE	CODE	HOW TO MEASURE	CRITICAL	TYPE	TOLERANCE	SMALL	MEDIUM	LARGE	XL	2XL	3XL
Center Front Length	h8YzLx	Measure from center front neck joining seams straight down to the bottom of the garment	true	Full	0 in	26 in	26 in	26 in	26 in	26 in	26 in
Across Shoulder	13	Measure straight across front from armhole seam/edge to armhole seam/edge at shoulder seam or across natural shoulder fold line created if there is no seam.	true	Full	1/4 in	18 in	18 in	18 in	18 in	18 in	18 in
Across Chest	15	Measure 2 1/2" down from collar/rib joining seam at center front straight across front of garment from armhole seam/edge to armhole seam/edge. [Note: the 2 1/2" measurement point is for misses/womens wear only and may need to be adjusted up or down 1/4" to 1/2" accordingly for men's, children's, junior's and larger/plus sizes. Indicate any changes on spec sheet.]	false	Half	1/4 in	16 in	16 in	16 in	16 in	16 in	16 in
Bottom Opening/Sweep Width Circumference (woven top)	27	Measure from edge of garment/side seam straight across garment at bottom opening. Reporting half of the circumference measurement. [Note: if sweep has pleats, measure with pleats closed or relaxed.]	false	Full	1/2 in	20 in	20 in	20 in	20 in	20 in	20 in
Neck Depth Front	58	Measure from CB neck joining seam to CF neck joining	true	Full	1/8 in	3 in	3 in	3 in	3 in	3 in	3 in
Neck Width, Collar	63	Measure straight across back neck from neck-shoulder joining seam to neck-shoulder joining seam or natural shoulder line if no seam. This measurement is taken with back of garment faceup.	true	Full	1/8 in	9 in	9 in	9 in	9 in	9 in	9 in
Collar Height	72	Measure from collar/rib joining seam at center back neck straight up to outer edge.	true	Full	0 in	3 in	3 in	3 in	3 in	3 in	3 in
Curved Armhole Width Circumference (woven)	43	Measure from top of shoulder joining seam/edge to bottom of armhole, following contour of armhole. Reporting half of the circumference measurement.	true	Half	0 in	12 in	12 in	12 in	12 in	12 in	12 in
Sleeve Opening Width, Stretched (Knit)	54	Lay garment sleeve flat, measure opening from seam to fold while fully stretched	true	Half	1/8 in	5 in	5 in	5 in	5 in	5 in	5 in
Center Back Length	3	Measure from center back neck joining seam straight down to bottom of garment at center back. If needed, gently lift the collar away from back neck to expose joining seam.	false	Full	1/2 in	26 1/2 in	26 1/2 in	26 1/2 in	26 1/2 in	26 1/2 in	26 1/2 in



Sample Size: MEDIUM

POINT OF MEASURE	CODE	HOW TO MEASURE	CRITICAL	TYPE	TOLERANCE
Center Front Length	h8YzLx	Measure from center front neck joining seams straight down to the bottom of the garment	true	Full	0 in
Across Shoulder	13	Measure straight across front from armhole seam/edge to armhole seam/edge at shoulder seam or across natural shoulder fold line created if there is no seam.	true	Full	1/4 in
Across Chest	15	Measure 2 1/2" down from collar/rib joining seam at center front straight across front of garment from armhole seam/edge to armhole seam/edge. [Note: the 2 1/2" measurement point is for misses/womens wear only and may need to be adjusted up or down 1/4" to 1/2" accordingly for men's, children's, junior's and larger/plus sizes. Indicate any changes on spec sheet.]	false	Half	1/4 in
Bottom Opening/Sweep Width Circumference (woven top)	27	Measure from edge of garment/side seam straight across garment at bottom opening. Reporting half of the circumference measurement. [Note: if sweep has pleats, measure with pleats closed or relaxed.]	false	Full	1/2 in
Neck Depth Front	58	Measure from CB neck joining seam to CF neck joining	true	Full	1/8 in
Neck Width, Collar	63	Measure straight across back neck from neck-shoulder joining seam to neck-shoulder joining seam or natural shoulder line if no seam. This measurement is taken with back of garment faceup.	true	Full	1/8 in
Collar Height	72	Measure from collar/rib joining seam at center back neck straight up to outer edge.	true	Full	0 in
Curved Armhole Width Circumference (woven)	43	Measure from top of shoulder joining seam/edge to bottom of armhole, following contour of armhole. Reporting half of the circumference measurement.	true	Half	0 in
Sleeve Opening Width, Stretched (Knit)	54	Lay garment sleeve flat, measure opening from seam to fold while fully stretched	true	Half	1/8 in
Center Back Length	3	Measure from center back neck joining seam straight down to bottom of garment at center back. If needed, gently lift the collar away from back neck to expose joining seam.	false	Full	1/2 in